



IMAGINE MORE

HEALTH + WELLNESS



IMAGINE MORE...for
every **CLIENT**
every **PROJECT**
every **INTERACTION**
every **DAY**



WELLSTAR TRANQUILITY HOSPICE

AUSTELL, GA

Wellstar's Tranquility Hospice is a two-story, 26,000 square foot residential hospice facility providing private, semi-private and two-room suites. Tranquility is northwest Georgia's first inpatient hospice facility, housing terminally ill patients in the last few months of their lives. The site includes parking, a walking track and gardens. Each of the different living units is designed to provide natural light for the residents. The 20 unit facility consists of 16 private rooms, 2 semiprivate rooms and 2 two-room suites. One private room is designed

to accommodate patients with infectious diseases and one private room is designed for pediatric use. A Day Room accommodates approximately 6 day care patients. Common spaces for use by patients and family members include a chapel, den/family room, an activity room, a family dining room, personal laundry, library and screened porches. Tranquility also houses meeting rooms which will be used for continuing education, volunteer training and bereavement groups for families.





SOUTHWELL MEDICAL HEALTH & REHABILITATION CENTER

ADEL, GA

As part of the planning for the replacement of their Adel campus, Southwell Medical wanted to extend the hospitality and wellness focus of the facility into the geriatric psychiatric unit. The 12 bed unit is located on the backside of the building, allowing privacy and security to be maintained while still providing a dedicated outdoor garden. There are two semi-private rooms and 8 private rooms, all with private bathrooms. While the priority was to provide behavioral health-approved light fixtures, finishes, and plumbing fixtures, special care was given to choose selections that do not feel institutional.

The chosen colors and materials evoke a sense of calm for the patients to assist in their treatment plans. A large activity space with

an operable partition was provided to give the patients and nursing staff maximum flexibility in using the space when a Quiet Activity section is not needed. The Nurses' Station is directly adjacent to this space to provide visibility into the space as well as into the patient rooms. Another priority space for the unit was a secure outdoor space that could be used by the patients. A custom mural was painted on the perimeter wall to extend the calming images and colors out into the space as well as furniture for lounging, activity tables, and gardening provided. Additional program includes a Visitor Lounge, Patient Laundry, Conference Room, Exam/Intake room for patients, Staff-assist Shower with hair washing station, and dedicated support spaces.





SOUTHERN REGIONAL MEDICAL CENTER

RIVERDALE, GA

The desire for creating a dedicated and safe environment for Southern Regional's geriatric patients with psychiatric needs drove the planning and design of their new inpatient Geriatric-Psych Unit. Located on the Fifth floor of their existing patient tower two wings have been completely renovated to provide a safe, ligature resistant environment while providing calming, nature inspired spaces that feel welcoming to patients.

The unit provides 16 geri-psych patient rooms, secure holding room, quiet room and activity/

dining room. There is a patient laundry room and nurse station with a high level of visibility over the unit and activity areas. The unit also provides an access controlled staff only off stage area where the med room, personal belonging room and staff break areas are located. Patient and Visitor entry into the unit is through a sally port. All of the fixtures, lighting, outlets, view windows and details have been hand selected for their appropriate use in a behavioral health unit and to create a safe environment for the patients and staff.





NORTHEAST GEORGIA MEDICAL CENTER HOSPICE

GAINESVILLE, GA

This hospice unit is a comprehensive seven-bed unit, built for the sole purpose of providing palliative care for terminally ill patients nearing end of life. Located on the fifth floor of the hospital in an underutilized area, the 5,570-SF portion of the floor was demolished in two phases to maintain access to the elevators.

Designed with flexibility in mind, the unit can transition to an acute care unit when a free-standing hospice facility is built. The unit features a central nursing station with medical prep, nourishment, and doctors' dictation area.

Staff breakroom, office and conference area are in a private but accessible location. Family waiting and respite space with restroom and vending area are located conveniently near elevator. A consultation room with virtual aquarium, ambient lighting and comfortable seating offer privacy and calming environment.

Patient rooms are designed to be comfortable and welcoming with integrated artwork and wood-toned furnishings and headwall. All rooms have handicap accessible toilets with showers.





DEKALB MEDICAL AT NORTH DECATUR

DECATUR, GA

The Women's Center at DeKalb Medical offers a comprehensive array of obstetric, gynecological, and maternity services, with an emphasis on family centered maternity care. The design team of CDH Partners, developed a center that features all private rooms with an inviting lodge atmosphere filled with soothing colors, natural stone accents, antique brick, amber-toned lighting, warm lobby fireplaces with mission-style furnishings. The five-story facility includes 18 private Labor-Delivery-Recovery (LDR) hotel-like suites, which give expectant mothers the convenience and comfort of staying in the same room before, during, and after delivery. There are 8 private

family waiting areas located adjacent to the LDR suites. It is also equipped with the largest antepartum rooms in Georgia for expectant mothers requiring hospitalization before delivery. There are also 62 postpartum Mother-Baby rooms with high speed Internet access, refrigerators, private bathrooms, and window seat couches for guests.

The Women's & Surgical Center features Five Star amenities including a new bistro, a business center, a 100 seat auditorium, classrooms, a boutique, and underground parking with an underground elevator which takes patients directly to the admissions department.



FIRM HISTORY

CDH BACKGROUND

BASIC COMPANY INFORMATION

CDH Partners, Inc.
 3330 Cumberland Blvd, SE | Suite 100
 Atlanta, GA 30339
 o: 770.423.0016 | d: 678.784.3442
 m: 404.808.5106 | f: 770.424.0260
 www.cdhpartners.com

Primary Contact:
 Mary Lindeman, Principal and Owner
 mary.lindeman@cdhpartners.com

CDH Partners is a private C-Corporation. It was founded in 1977 and incorporated in the state of Georgia in January 1993.

HISTORY AND GROWTH

CDH Partners is an award-winning, fully integrated design firm serving clients nationwide. CEO and President Melissa Cantrell and Vice President David Strickland along with Mary Lindeman, Jonathan Fallin, Carine Kroko, Danny Mackey, and Rhea Jeanne Starnes make up the firm's leadership team. Our cohesive design team includes talented architects, interior designers, and support staff who embrace a client-centered design approach.

Over the last 46 years, CDH Partners has built a practice that serves organizations that make a positive impact on society. The buildings we design foster the most fundamental human needs, including space for fellowship, faith, and support. Every employee at CDH shares a purpose-driven mentality – to build better lives through design. This creates an integrated team of architects, interior designers, and support staff who are fully invested in our clients' mission. The resulting facilities provide personalized environments that enable our clients to succeed.

LEADERSHIP + STAFF BREAKDOWN



MELISSA
 Cantrell
 CEO / President, Owner
**Education +
 Research**



DAVID
 Strickland
 VP / Owner
**Worship +
 Community**



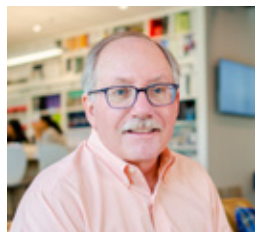
MARY
 Lindeman
 Principal / Owner
**Health +
 Wellness**



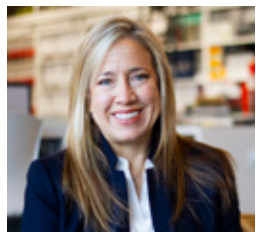
JONATHAN
 Fallin
 Senior Associate /
 Owner



CARINE
 Kroko
 Senior Associate /
 Owner



DANNY
 Mackey
 Senior Associate /
 Owner



RHEA JEANNE
 Starnes
 Senior Associate /
 Owner



40
 TEAM
 MEMBERS

28
 Architectural
 (14 Registered)

3
 Interior Designers
 (3 Registered)

9
 Support
 Staff

10
 LEED Accredited
 Professionals
 (Included in total)





3330 Cumberland Blvd. SE Suite 100
Atlanta, GA 30339

770.423.0016 | cdhpartners.com
in f t p